

Australia R-90 Folding Arm Awning

The ultimate awning for Australian conditions



Classic Italian Design, manufactured in Australia

Unique Balteus Arm technology

Provides 3 times longer life expectancy than traditional chain arms

Gutter system built into the front bar to assist in the displacement of rain water

Operate manually with handle, or motorised with remote control or mobile phone

Select the pitch of your awning at time of installation

Fully retractable back to wall when not in use

Options

Select LED lights upgrade option in Balteus Arms

Add a colour co-ordinated aluminium Weather Shield

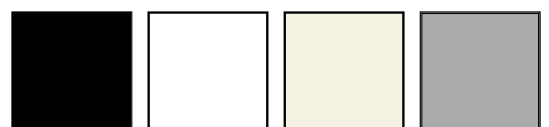
Choose from two optional Valance designs for the front bar

Maximum dimensions for R-90

7m width x 3.6m projection, for single awning

Option to link in series to cover wider openings

Hardware Colour Options *



Black

White

Ivory

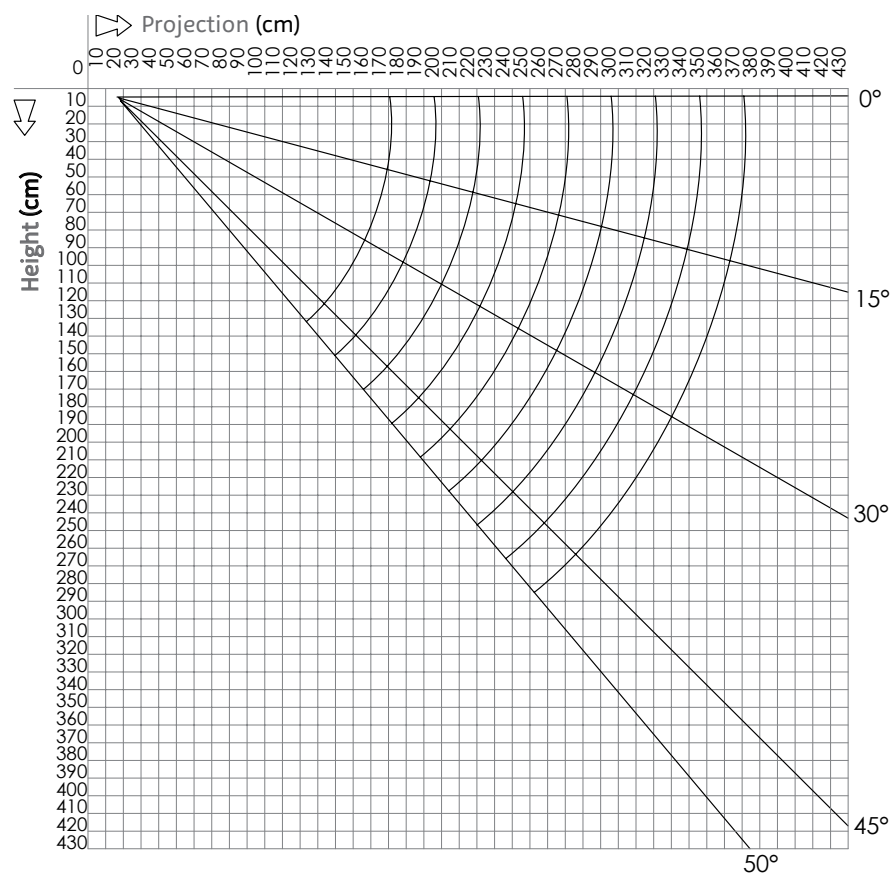
Grey

(*) Colours indicative only, please refer to swatch for accuracy

Technical details: Australia R-90 Folding Arm Awning

Pitch adjustment range of folding arm awnings

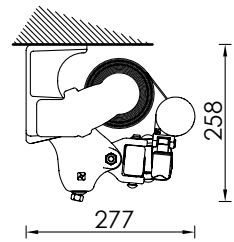
Headroom at Varying Pitches



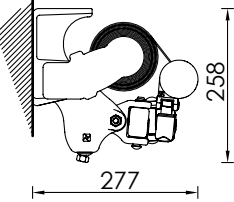
Installation Options

Allow the most secure installation point.

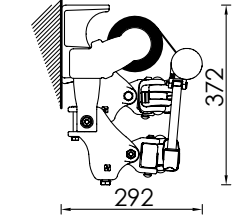
Ceiling Installation



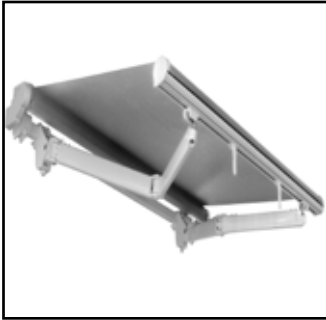
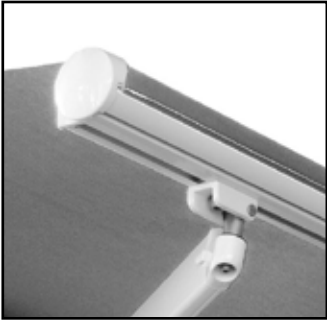
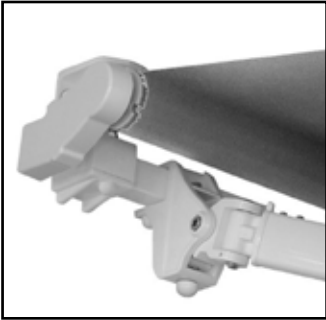
Wall Installation



Cross Over Arm Installation



R90 Key Features Close Up



Minimum width per projection - 1 pair arms		
Projection	Min. Width	Min. Width with crossed arms
160	191	129
210	241	154
260	291	179
310	341	204
360	391	229
410	431	254



* 2 refers to testing under European Standard EN 13561, (winds up to 39km/h). Which is also the Australian Standard for retractable awnings. Awnings must be mounted as perspecified and awning always retracted in windy conditions.

