

Australia R-Pitch Folding Arm Awning

The ultimate awning for Australian conditions



Classic Italian Design, manufactured in Australia

Unique Balteus Arm technology

Provides 3 times longer life expectancy than traditional chain arms

Gutter system built into the front bar to assist in the displacement of rain water

Operate manually with handle, or motorised with remote control or mobile phone

Alter the pitch of the awning as required after installation, to a maximum of 70 degrees

Fully retractable back to wall when not in use

Suitable for installation Face Fit or on a Reveal

Options

Select LED lights upgrade option in Balteus Arms

Add a colour co-ordinated aluminium Weather Shield

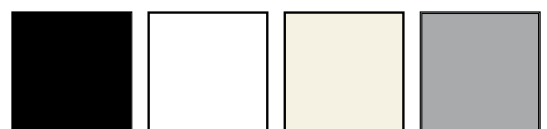
Choose from two optional Valance designs for the front bar

Maximum dimensions for R-Pitch

7m width x 3.6m projection, for single awning

Option to link in series to cover wider openings

Hardware Colour Options *



Black

White

Ivory

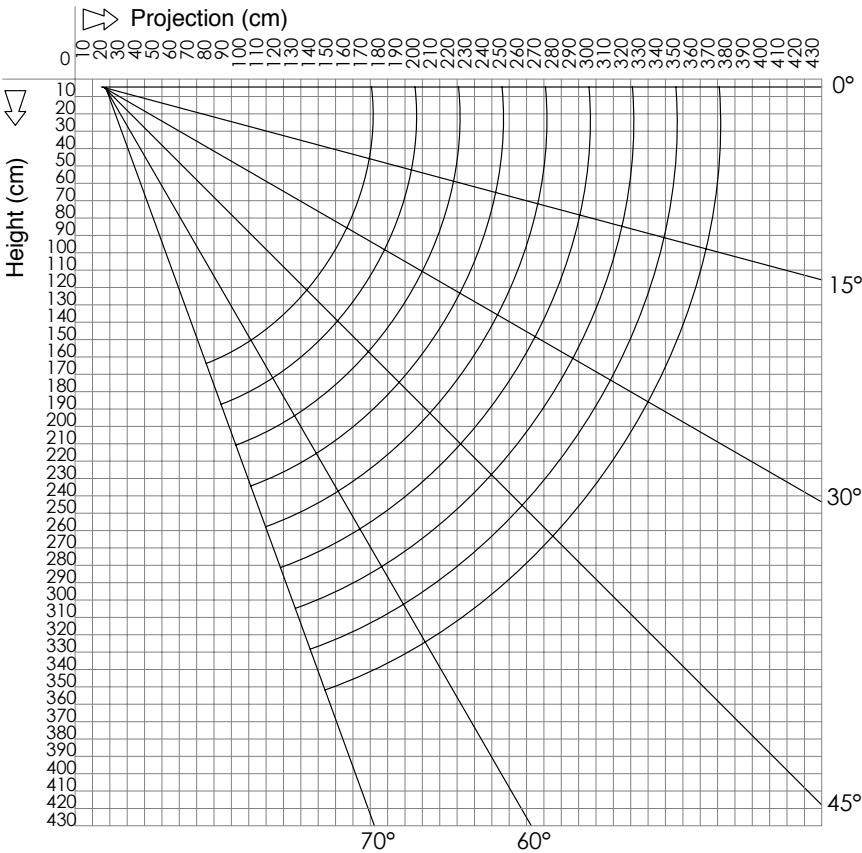
Grey

(*) Colours indicative only, please refer to swatch for accuracy

Technical details: Australia R-Pitch Folding Arm Awning

Pitch adjustment range of folding arm awnings

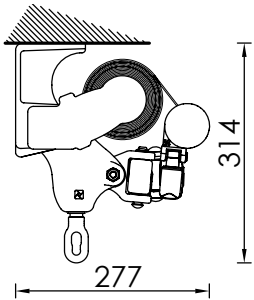
Headroom at Varying Pitches



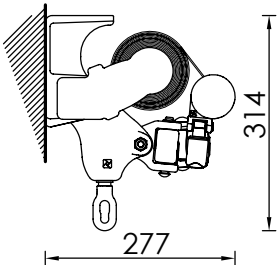
Installation Options

Allow the most secure installation point.

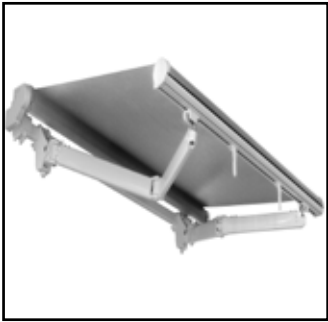
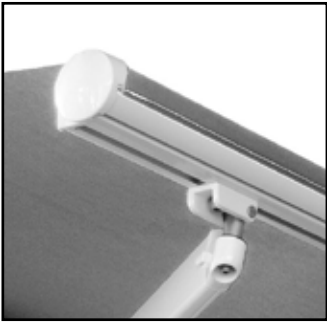
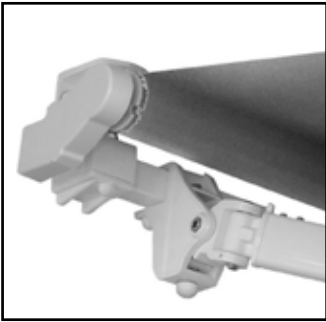
Ceiling Installation



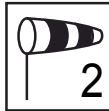
Wall Installation



R-Pitch Key Features Close Up



Minimum width per projection	
Projection	Min. Width
160	191
210	241
260	291
310	341
360	391
410	431



* 2 refers to testing under European Standard EN 13561, (winds up to 39km/h). Which is also the Australian Standard for retractable awnings. Awnings must be mounted as perspecified and awning always retracted in windy conditions.

