

# Skye

## Roller, Roman & Panel Fabric



- Application:**
- Roller, Roman and Panel Window Blinds
  - Wide Width Windows

- Characteristics:**
- 9 Blackout (BO), 9 Light Filtering (LF)
  - 3000mm

- Technical:**
- Composition (BO): 100% Polyester with Foamed Acrylic Backing
  - Composition (LF): 100% Polyester with Acrylic Coating
  - PVC Free | Lead Free
  - Light Fastness: 6 (Blue Scale) Tested to ISO 105-B02:2014
  - Nominal Weight: 375gsm (BO), 210gsm (LF)
  - Nominal Thickness: 0.57mm (BO), 0.45mm (LF)

- Performance:**
- Opacity: Light Filtering and Blackout (Complies to AS 2663.3.1999)
  - UV Protection (BO): 98% (Tested to AS/NZS 4399:1996)

- Protection:**
- Complies with Building Code of Australia requirements for Class 2 to 9 (a) buildings. Tested to AS 1530 Part III.
  - Air Quality: VOC Tested US EPA 5021 A:2003
  - Greenguard Gold Accredited (no harmful VOC emissions)

- Care:**
- Surface dust should be removed with duster or soft cloth. Never use abrasive products or solvent/industrial based cleaners.

- Note:**
- Colour variances may occur between fabric production batches. These variances are within industry tolerances.

### Colour Range \*



Skye



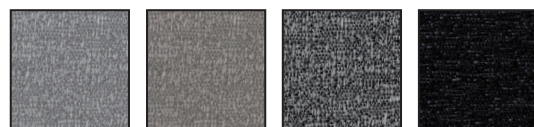
swan

porcelain

oyster

sail

chiffon



chrome

earl grey

blazer

raven

\* Images representative only